

PROJECT DESCRIPTION OF HAWAII CITY PLAZA

Project Name: HAWAII CITY PLAZA

Project Address: 710 SHERIDAN ST, HONOLULU, HI 96814, UNITED STATES

Project Company: HAWAII CITY PLAZA LP (project owner)

The project has 184 condominiums and some business units. It is a commercial and residential project. The total height of the building is about 250 feet.

- Three retail commercial stores and some parking lots on the first floor.
- Parking lots on the 2nd to 5th floor.
- Public facilities on the 6th floor, including swimming pool, owners' activity center, GYM, small theater, Children's activity area and 4 residential units.
- Affordable housing on the 6th floor (1 unit) to 10th floor.
- Condominiums sold at market price on the 6th floor (3 units) and on the 11th floor to 27th floor (No 13th floor).
- The parking space and public support area of the project is approximately 180,000 square feet.
- 184 condominiums cover an area of approximately 140,000 square feet.
- The commercial area is about 7,000 square feet.
- This is a real estate development project with the standards of hotel property management.
- The project has started construction in February, 2019 and is expected to be completed in October, 2021.





SURROUNDINGS OF HAWAII CITY PLAZA

- 2 minutes walking to Walmart and Sam's Club
- 8 minutes walking to Ala Moana Transit (Light Rail)
- 10 minutes walking to Ala Moana Shopping Center
- 10 minutes walking to several supermarkets and malls
- 15 minutes walking to Ala Moana park and beach
- 20 minutes driving to Honolulu Airport

EDUCATION

There are several elementary schools, middle schools and high schools located around the projects, including private schools, such as Iolani School and Punahou School, within 10 to 20 minutes driving.

University of Hawaii – has 21000 students and ranked 156 in most recent US NEWS.

Chaminade University – has 1130 students.

University of the Pacific, Hawaii – has 8500 students.

Brigham Young University- Hawaii Branch- has 2400 students.





ALA MOANA SHOPPING CENTER

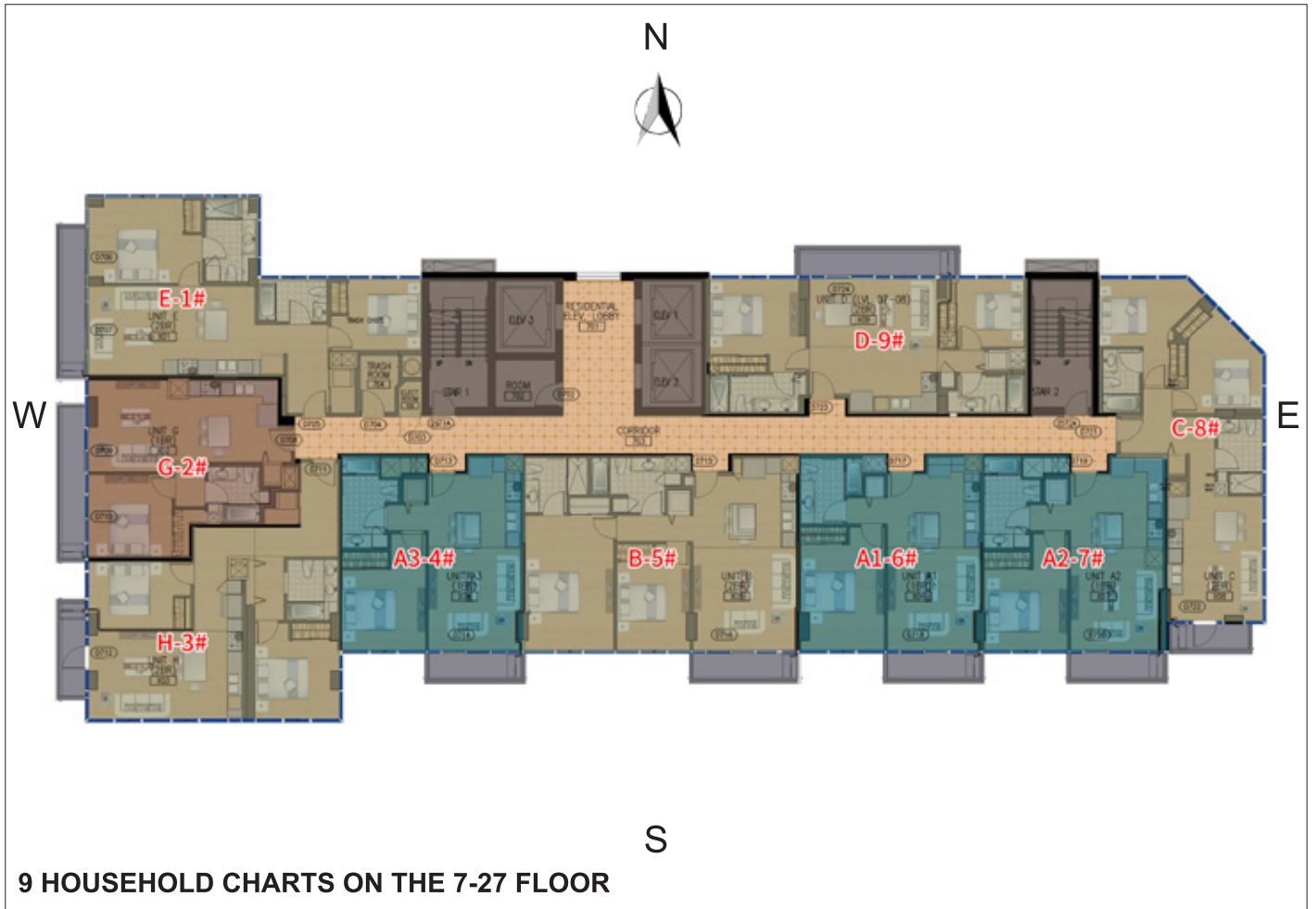


WALMART



ALA MOANA BEACH PARK





RESIDENCE TYPE INTRODUCTION OF HAWAII CITY PLAZA

E-1#	2 BEDS	2 BATHS	LIVING AREA: 917 SF	LANAI AREA: 85 SF
G-2#	1 BED	1 BATH	LIVING AREA: 607 SF	LANAI AREA: 86 SF
H-3#	2 BEDS	1 BATH	LIVING AREA: 926 SF	LANAI AREA: 55 SF
A3-4#	1 BED	1 BATH	LIVING AREA: 653 SF	LANAI AREA: 55 SF
B-5#	2 BEDS	2 BATHS	LIVING AREA: 989 SF	LANAI AREA: 61 SF
A1-6#	1 BED	1 BATH	LIVING AREA: 653 SF	LANAI AREA: 55 SF
A2-7#	1 BED	1 BATH	LIVING AREA: 653 SF	LANAI AREA: 55 SF
C-8#	2 BEDS	2 BATHS	LIVING AREA: 798 SF	LANAI AREA: 44 SF
D-9#	2 BEDS	2 BATHS	LIVING AREA: 811 SF	LANAI AREA: 89 SF

PUBLIC SUPPORT OF HAWAII CITY PLAZA

OWNERS' ACTIVITY CENTER



OWNERS' ACTIVITY CENTER



CHILDREN'S ACTIVITY AREA



PUBLIC SUPPORT OF HAWAII CITY PLAZA

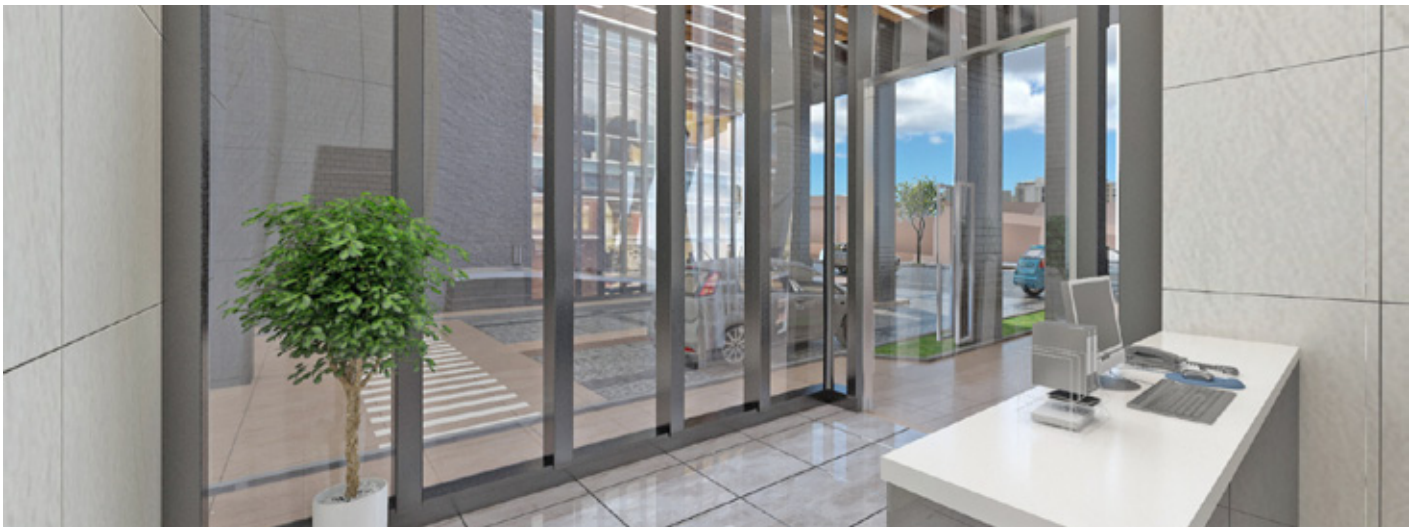
GYM



GAME ROOM



LOBBY



PUBLIC SUPPORT OF HAWAII CITY PLAZA

SMALL THEATER



ROOF VIEW TERRACE



SWIMMING POOL



PUBLIC SUPPORT OF HAWAII CITY PLAZA

SWIMMING POOL



LOCATION OF HAWAII CITY PLAZA



E-1# 2 BEDS / 2 BATHS / LIVING AREA: 917 SF / LANAI AREA: 85 SF
360-DEGREE VIEW www.hawaii-cityplaza.com



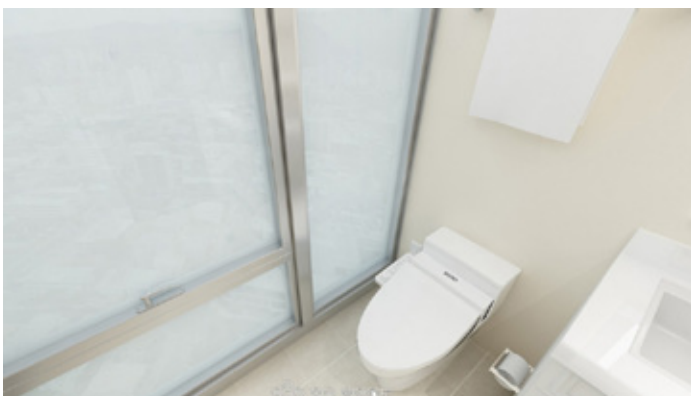
BALCONY VIEW



This is the 360 panorama image for lanai taken by 2019, the view is subject to change.

REFERENCE MAP OF INTERIOR DESIGN

360-DEGREE VIEW
www.hawaii-cityplaza.com



Tip: The above decoration pictures are for reference only, and the actual decoration may be partially inconsistent with this leaflet. If you purchase our house, before the house is formally renovated, we will adopt some of your favorite decoration materials and colors. However, the plan can not be changed. If the decoration material exceeds the budget, we can increase the reasonable material cost through negotiation.

G-2# 1 BED / 1 BATH / LIVING AREA: 607 SF / LANAI AREA: 86 SF

360-DEGREE VIEW www.hawaii-cityplaza.com



BALCONY VIEW



This is the 360 panorama image for lanai taken by 2019, the view is subject to change.

REFERENCE MAP OF INTERIOR DESIGN

360-DEGREE VIEW
www.hawaii-cityplaza.com



Tip: The above decoration pictures are for reference only, and the actual decoration may be partially inconsistent with this leaflet. If you purchase our house, before the house is formally renovated, we will adopt some of your favorite decoration materials and colors. However, the plan can not be changed. If the decoration material exceeds the budget, we can increase the reasonable material cost through negotiation.

H-3# 2 BEDS / 1 BATH / LIVING AREA: 926 SF / LANAI AREA: 55 SF

360-DEGREE VIEW www.hawaii-cityplaza.com



BALCONY VIEW



This is the 360 panorama image for lanai taken by 2019, the view is subject to change.

REFERENCE MAP OF INTERIOR DESIGN

360-DEGREE VIEW
www.hawaii-cityplaza.com



Tip: The above decoration pictures are for reference only, and the actual decoration may be partially inconsistent with this leaflet. If you purchase our house, before the house is formally renovated, we will adopt some of your favorite decoration materials and colors. However, the plan can not be changed. If the decoration material exceeds the budget, we can increase the reasonable material cost through negotiation.

A3-4# 1 BED / 1 BATH / LIVING AREA: 653 SF / LANAI AREA: 55 SF

360-DEGREE VIEW www.hawaii-cityplaza.com



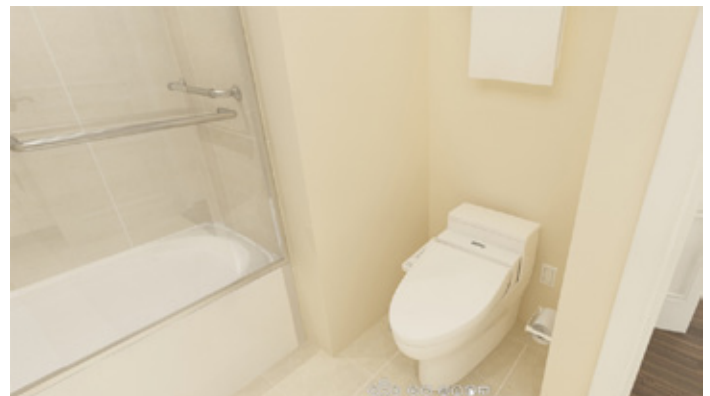
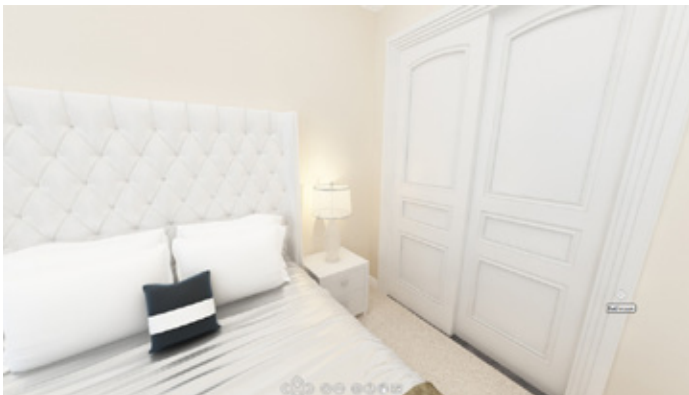
BALCONY VIEW



This is the 360 panorama image for lanai taken by 2019, the view is subject to change.

REFERENCE MAP OF INTERIOR DESIGN

360-DEGREE VIEW
www.hawaii-cityplaza.com



Tip: The above decoration pictures are for reference only, and the actual decoration may be partially inconsistent with this leaflet. If you purchase our house, before the house is formally renovated, we will adopt some of your favorite decoration materials and colors. However, the plan can not be changed. If the decoration material exceeds the budget, we can increase the reasonable material cost through negotiation.

B-5# 2 BEDS / 2 BATHS / LIVING AREA: 989 SF / LANAI AREA: 61 SF

360-DEGREE VIEW www.hawaii-cityplaza.com



BALCONY VIEW



This is the 360 panorama image for lanai taken by 2019, the view is subject to change.

REFERENCE MAP OF INTERIOR DESIGN

360-DEGREE VIEW
www.hawaii-cityplaza.com



Tip: The above decoration pictures are for reference only, and the actual decoration may be partially inconsistent with this leaflet. If you purchase our house, before the house is formally renovated, we will adopt some of your favorite decoration materials and colors. However, the plan can not be changed. If the decoration material exceeds the budget, we can increase the reasonable material cost through negotiation.

A1-6# 1 BED / 1 BATH / LIVING AREA: 653 SF / LANAI AREA: 55 SF

360-DEGREE VIEW www.hawaii-cityplaza.com



BALCONY VIEW



This is the 360 panorama image for lanai taken by 2019, the view is subject to change.

REFERENCE MAP OF INTERIOR DESIGN

360-DEGREE VIEW
www.hawaii-cityplaza.com



Tip: The above decoration pictures are for reference only, and the actual decoration may be partially inconsistent with this leaflet. If you purchase our house, before the house is formally renovated, we will adopt some of your favorite decoration materials and colors. However, the plan can not be changed. If the decoration material exceeds the budget, we can increase the reasonable material cost through negotiation.

A2-7# 1 BED / 1 BATH / LIVING AREA: 653 SF / LANAI AREA: 55 SF

360-DEGREE VIEW www.hawaii-cityplaza.com



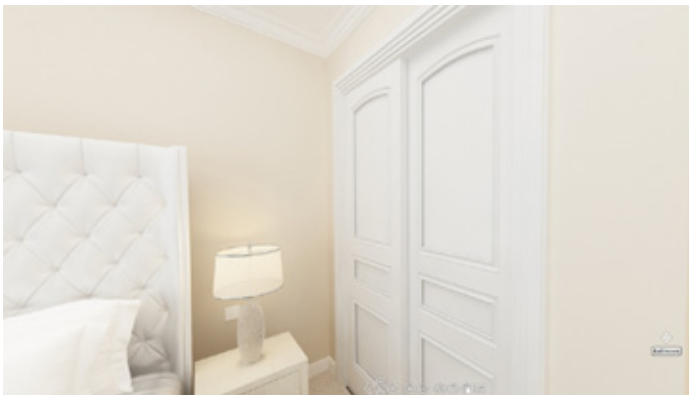
BALCONY VIEW



This is the 360 panorama image for lanai taken by 2019, the view is subject to change.

REFERENCE MAP OF INTERIOR DESIGN

360-DEGREE VIEW
www.hawaii-cityplaza.com



Tip: The above decoration pictures are for reference only, and the actual decoration may be partially inconsistent with this leaflet. If you purchase our house, before the house is formally renovated, we will adopt some of your favorite decoration materials and colors. However, the plan can not be changed. If the decoration material exceeds the budget, we can increase the reasonable material cost through negotiation.

C-8# 2 BEDS / 2 BATHS / LIVING AREA: 798 SF / LANAI AREA: 44 SF

360-DEGREE VIEW www.hawaii-cityplaza.com



BALCONY VIEW



This is the 360 panorama image for lanai taken by 2019, the view is subject to change.

REFERENCE MAP OF INTERIOR DESIGN

360-DEGREE VIEW
www.hawaii-cityplaza.com



Tip: The above decoration pictures are for reference only, and the actual decoration may be partially inconsistent with this leaflet. If you purchase our house, before the house is formally renovated, we will adopt some of your favorite decoration materials and colors. However, the plan can not be changed. If the decoration material exceeds the budget, we can increase the reasonable material cost through negotiation.

D-9# 2 BEDS / 2 BATHS / LIVING AREA: 811 SF / LANAI AREA: 89 SF

360-DEGREE VIEW www.hawaii-cityplaza.com



BALCONY VIEW



This is the 360 panorama image for lanai taken by 2019, the view is subject to change.

REFERENCE MAP OF INTERIOR DESIGN

360-DEGREE VIEW
www.hawaii-cityplaza.com



Tip: The above decoration pictures are for reference only, and the actual decoration may be partially inconsistent with this leaflet. If you purchase our house, before the house is formally renovated, we will adopt some of your favorite decoration materials and colors. However, the plan can not be changed. If the decoration material exceeds the budget, we can increase the reasonable material cost through negotiation.